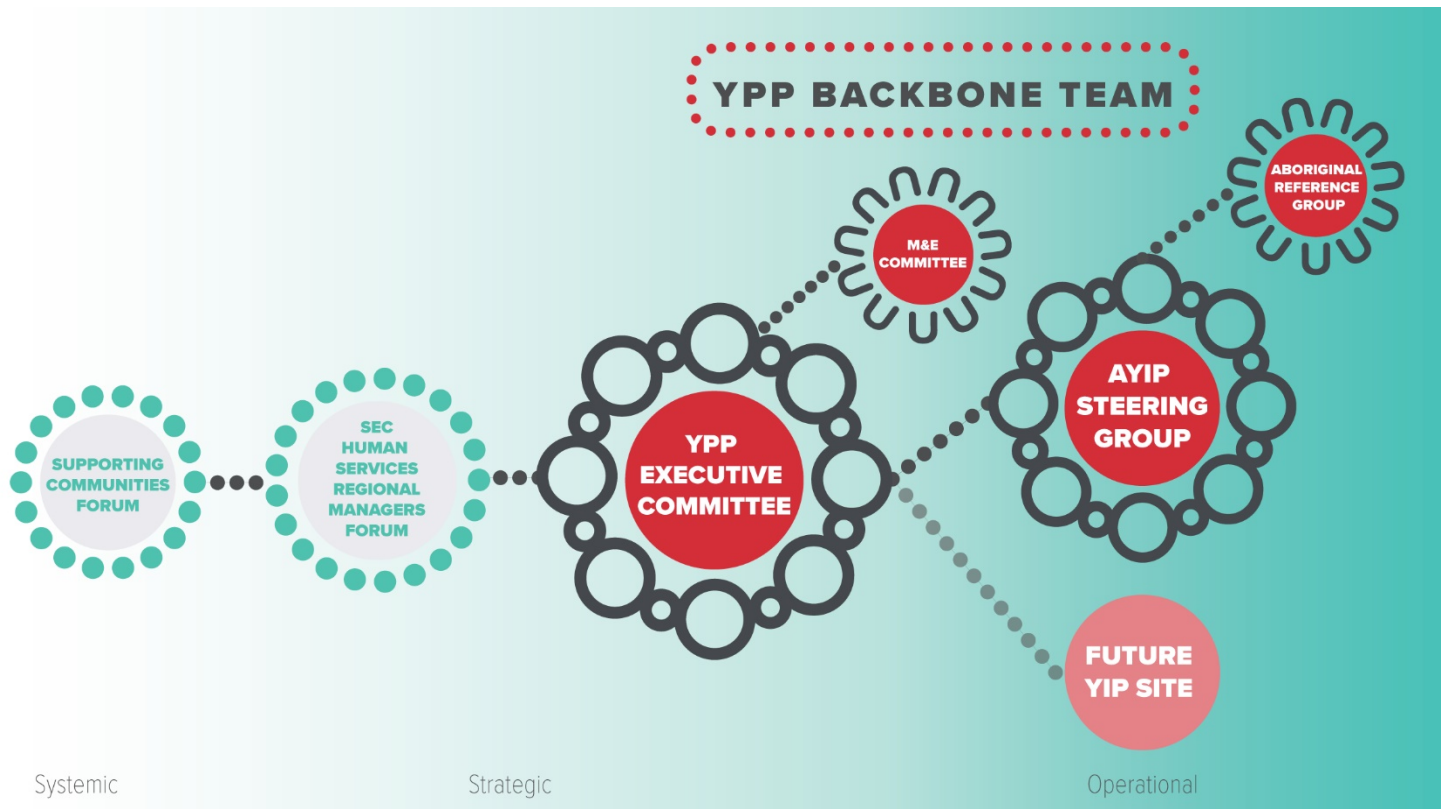


# YOUTH PARTNERSHIP PROJECT

## Governance Structure



| YPP BACKBONE TEAM   |  |   |
|---|--|---|
| Provides administrative, technical, strategic and operational support to the YPP, and fosters partnerships and collaboration between youth services and organisations throughout the South East Corridor of Perth.                                      |  |   |
| SUPPORTING COMMUNITIES FORUM  | YPP EXECUTIVE COMMITTEE  | AYIP STEERING GROUP   |
| Brings together government and non-government leaders to progress the agenda of collaboration, coordination and information sharing to support the delivery of quality services and better outcomes for vulnerable Western Australians.                 | Provides effective and transparent governance, strategic guidance and general advice to ensure the successful delivery of the Youth partnership Project.   | Provides oversight of the AYIP partnership, under the AYIP MOU. Works to provide effective and transparent decision making and general advice to ensure the successful implementation of the AYIP model.  |
| SEC HUMAN SERVICES REGIONAL MANAGERS FORUM  | M&E COMMITTEE  | AYIP ABORIGINAL REFERENCE GROUP   |
| Promotes coordinated and collaborative responses to address social issues and support vulnerable children and their families, while identifying systemic issues and gaps in the delivery of collaborative services in the South East Corridor of Perth. | Supports the evaluation of the YIP Model through design and monitoring of evaluation, providing evidence and data to demonstrate continued development of the model and outcomes for young people and the wider community. | Provide cultural advice, including on the development of AYIP projects, understanding of local kinships, advice on how to best support families, introductions to people or services who can provide support and training to build AYIP partners' cultural competence |